



www.jeffreygross.co.uk

CARDIFF

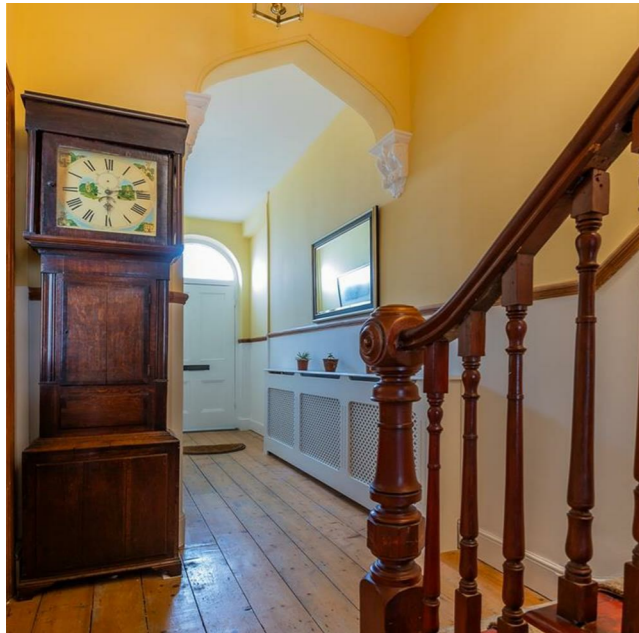
VALE

CAERPHILLY

BRISTOL

Rawden Place

RIVERSIDE



Comments by Mrs Ruby Ledley



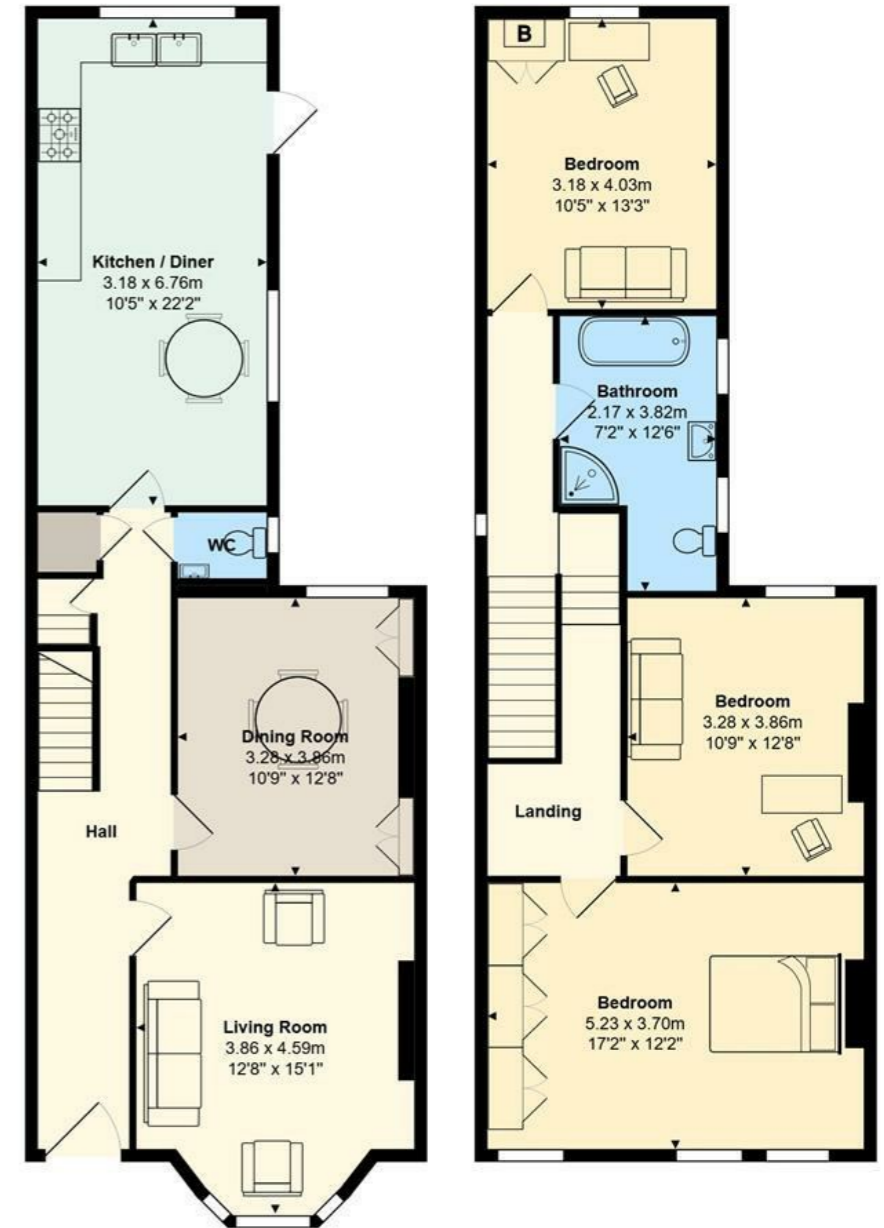
Property Specialist
Mrs Ruby Ledley
 Valuer

ruby@jeffreycross.co.uk

Rawden Place

Total Area: 175.6 m² ... 1890 ft²

All measurements are approximate and for display purposes only



Comments by the Homeowner





Rawden Place

Riverside, Cardiff, CF11 6LF

Guide Price

£400,000



3 Bedroom(s)



1 Bathroom(s)



1890.00 sq ft



Contact our
Pontcanna Branch

02920 499680

Welcome to Rawden Place, Riverside, Cardiff, this delightful house offers a perfect blend of classic charm and space. Spanning an impressive 1,890 square feet, the property boasts two inviting reception rooms.

The home features three well-proportioned bedrooms, providing ample space for family living or accommodating guests, or for those seeking more space.

With its generous layout and thoughtful design, this property presents an excellent opportunity for those seeking a home in a vibrant community. The Riverside area is known for its friendly atmosphere and proximity to local amenities, making it an ideal choice for families and professionals alike.



CARDIFF

VALE

CAERPHILLY

BRISTOL

www.jeffreygross.co.uk



Hallway

Living Room 12'8 x 15'1 (3.86m x 4.60m)

Dining Room 10'9 x 12'8 (3.28m x 3.86m)

WC

Kitchen 10'5 x 22'2 (3.18m x 6.76m)

Landing

Bedroom 1 17'2 x 12'2 (5.23m x 3.71m)

Bedroom 2 10'9 x 12'8 (3.28m x 3.86m)

Bathroom 7'2 x 12'6 (2.18m x 3.81m)

Bedroom 3 10'5 x 13'3 (3.18m x 4.04m)

Tenure

Freehold - To be confirmed by your legal advisor

School Catchment

Severn Primary School
Fitzalan High School

Ysgol Gymraeg Pwll Coch
Ysgol Gyfun Gymraeg Glantaf

Council Tax

Band E



